



VACUBOX

DRENA-LINE

VACUBOX 200-50

SEWAGE LIFTING STATIONS

VACUBOX 200 is for bigger domestic wastewater volume and larger storage capacity. Without requiring a great deal of construction work, it disposes of domestic wastewater from laundries, storage or cellar areas. VACUBOX 200 can be installed as a single as well as a duplex system. The required components for the installation of the pumps are part of the scope of supply. The duplex system provides bigger security in the disposal of wastewater.

In normal operation the two pumps operate alternately or at the same time to cope with peak load. The pump to be placed can be selected according to the amount of wastewater, the type of dirty water and the pumping power required. By adjusting the plastic cover frame, the sump cover can be adapted easily and variably to the floor and tile conditions.

The unit is compliant with EN 12050 standard.



CONSTRUCTION FEATURES

Water-tight PE tank (240 l) with connecting pieces for two inlets DN 100/150 and one DN 100, connecting piece for ventilation/cable conduit DN 70 and PVC 2" outlet.

VACUBOX 200-50 as underfloor version is equipped with adjustable cover frame with siphon.

The above floor version is equipped with odour-tight plastic cover (screwed fitted).

All junctions (tank/plastic cover frame/ cover plate) are fitted with profiled seals.

PRIOX submersible pump.

MOTOR

- Safe to run dry
- Degree of protection IP68
- Insulation class F
- Single-phase power supply with capacitor permanently on and thermal protection built into the motor casing
- Cable connection chamber completely insulated
- Self-lubricating ball bearings
- Speed of rotation 2850 rpm

USAGE DATA

- Type of liquid: waste water with suspended solids of maximum size 50 mm.
- Maximum liquid temperature 40°C
- Minimum drainage level 60 mm
- Walkover cover

TABLE OF MATERIALS

COMPONENT	MATERIAL	
PUMP BODY	STAINLESS STEEL X5 CRNI 1810 (AISI 304)	
SUCTION BASE	STAINLESS STEEL X5 CRNI 1810 (AISI 304)	
IMPELLER	STAINLESS STEEL X5 CRNI 1810 (AISI 304) CASTING	
SUPPLY CABLE	10 M H07 RN-F	
MOTOR SHAFT	STAINLESS STEEL X 12 CRNIS 1809 (AISI 416)	
MECHANICAL SEAL	GRAPHITE	OIL CHAMBER LUBRICATED
COUNTERFACE	CERAMIC	
SECONDARY SEAL	NBR RUBBER LEAP SEAL	
V-RING SAND GUARD	NBR RUBBER	



ABOVE-FLOOR VERSION

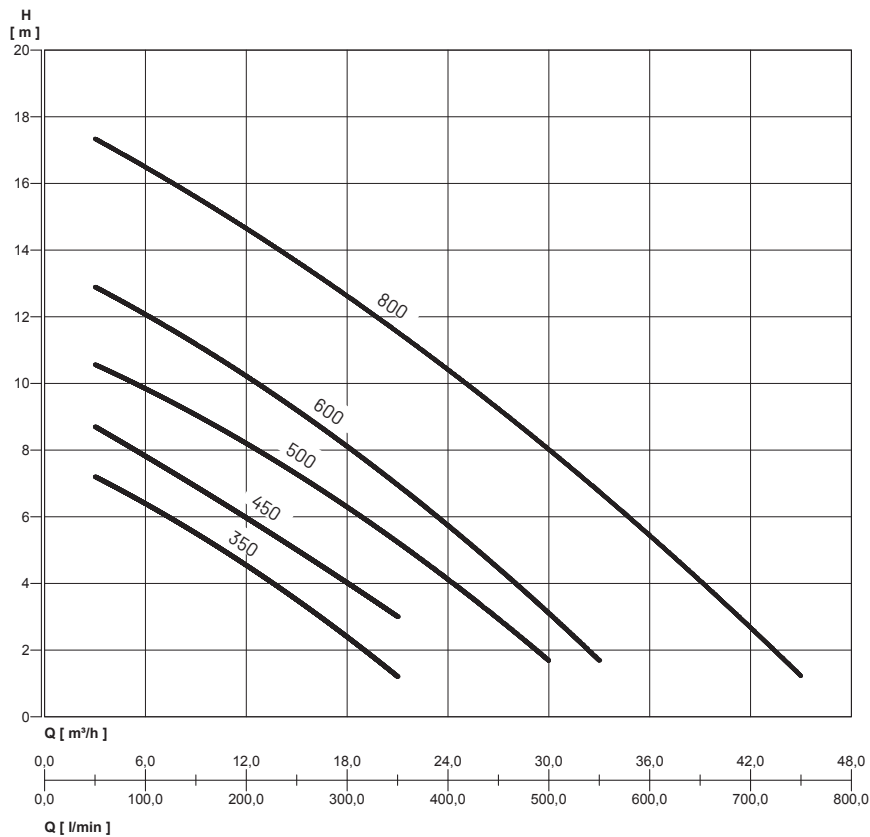


UNDERFLOOR VERSION



ABOVE-FLOOR VERSION	UNDERFLOOR VERSION
PRESSURE RESISTANT SUMP	WALKABLE COVER
BUOYANCY PROTECTION	LEVEL COMPENSATING FRAME
TWO TANK DELIVERY PIPES WITH CHECK VALVES	265 MM TANK NECK EXTENSION AVAILABLE AS ACCESSORY
PRESSURE AND ODOUR-TIGHT COVER	POSSIBLE INSTALLATION IN AREAS WITH HIGH GROUNDWATER LEVELS
	PRESSURE RESISTANT SUMP
	TWO TANK DELIVERY PIPES WITH CHECK VALVES

HYDRAULIC PERFORMANCES



VACUBOX TANK

CODE	MODEL
JP48190	VACUBOX 200-50 ABOVE-FLOOR VERSION *
JP48191	VACUBOX 200-50 UNDERFLOOR VERSION **

PERFORMANCES TABLE

CODE	MODEL	Motor power (P2)		Motor power (P2)		VOLTAGE (V)	In (A)	μF	Q	l/min m3/h	50	150	250	350	500	550	650	750
		[HP]	[KW]	[HP]	[KW]						3	9	15	21	30	33	39	45
N2110210 **	PRIOX 50-350/8 EN M	0,9	0,65	1,3	0,98	1 ~ 230 V	3,8	14	m.c.a.		7,2	5,5	3,5	1,2				
N2110200 **	PRIOX 50-350/8 EN M AUT	0,9	0,65	1,3	0,98	1 ~ 230 V	3,8	14			7,2	5,5	3,5	1,2				
N2110220 **	PRIOX 50-350/8 EN T	0,9	0,65	1,3	0,98	3 ~ 400 V	1,7				7,2	5,5	3,5	1,2				
N2110290 *	PRIOX 50-450/9 EN M	1	0,8	1,5	1,1	1 ~ 230 V	5	20			8,7	6,9	5	3				
N2110280 *	PRIOX 50-450/9 EN M AUT	1	0,8	1,5	1,1	1 ~ 230 V	5	20			8,7	6,9	5	3				
N2110240 **	PRIOX 50-500/11 EN M	1,4	1	2	1,55	1 ~ 230 V	7	20			10,5	9,2	7,2	5,2	1,7			
N2110230 **	PRIOX 50-500/11 EN M AUT	1,4	1	2	1,55	1 ~ 230 V	7	20			10,5	9,2	7,2	5,2	1,7			
N2110250 *	PRIOX 50-500/11 EN T	1,4	1	1,9	1,4	3 ~ 400 V	2,4				10,5	9,2	7,2	5,2	1,7			
N2110260 *	PRIOX 50-600/13 EN T	1,6	1,2	2,4	1,8	3 ~ 400 V	3,1				12,8	11,3	9,3	6,8	3	1,8		
N2110270 *	PRIOX 50-800/18 EN T	3,2	2,4	4	3	3 ~ 400 V	5,5			17,3	15,6	13,7	11,6	8	6,7	4	1,3	

* EN12050-1 COMPLIANT

** EN12050-2 COMPLIANT

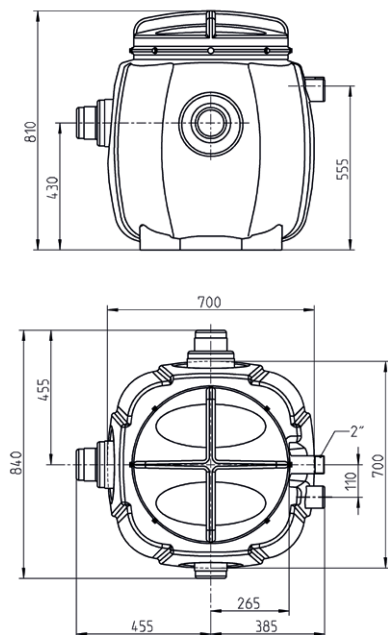
Attention: According to EN 12050-1, the pumping of waste water containing faeces is only permitted with the Vacubox 200-50 above floor with the pumps PRIOX 50-450/9 EN M, PRIOX 50-450/9 EN M AUT, PRIOX 50-500/11 EN T, PRIOX 50-600/13 EN T and PRIOX 50-800/18 EN T.

DIMENSIONS AND WEIGHTS

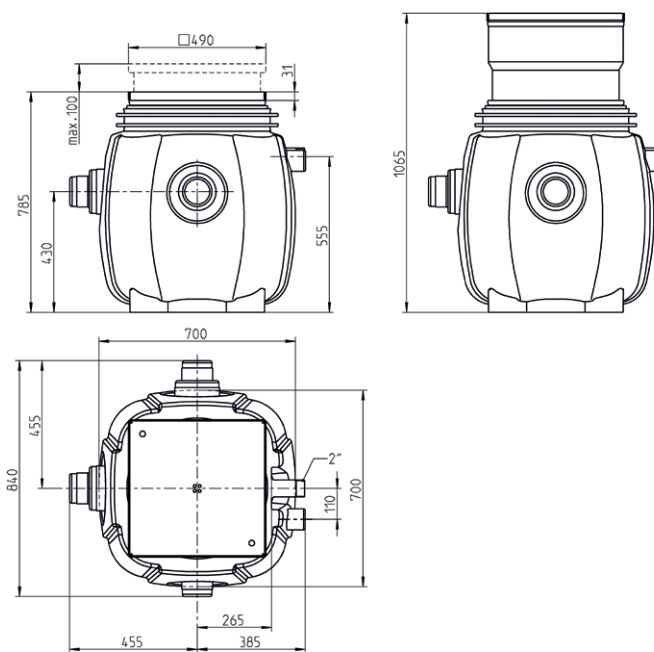


Prepared for single and duplex systems, all necessary equipment concerning piping and connectors is included in the scope of supply.

DIMENSIONS VERSION INTERRÉE



DIMENSIONS VERSION HORS SOL



MODEL	DIMENSION (mm) L x P x H	WEIGHT (kg)
VACUBOX 200 UNDERFLOOR VERSION	840x840x785	40
VACUBOX 200 ABOVE-FLOOR VERSION	840x840x810	25

ACCESSORIES

	CODE	MODEL (1 pump)	CODE	MODEL (2 pump)
	UZQ14080	EASYCONTROLLER D10-110 PRIOX 50-350/8 EN T PRIOX 50-500/11 EN T	UZQ14150	EASYCONTROLLER D20-110 PRIOX 50-350/8 EN T PRIOX 50-500/11 EN T
	UZQ14090	EASYCONTROLLER D10-150 PRIOX 50-600/13 EN T	UZQ14140	EASYCONTROLLER D20-150 PRIOX 50-600/13 EN T
	UZQ14100	EASYCONTROLLER D10-220 PRIOX 50-800/18 EN T	UZQ14130	EASYCONTROLLER D20-220 PRIOX 50-800/18 EN T
	UZQ14110-1	EASYCONTROLLER M10-240 VB PRIOX 50-350/8 EN M PRIOX 50-500/11 EN M PRIOX 50-450/9 EN M	UZQ14120-1	EASYCONTROLLER M20-240 VB PRIOX 50-350/8 EN M PRIOX 50-500/11 EN M PRIOX 50-450/9 EN M
	ZA012450	SUBMERSIBLE SWITCH PACK FOR SINGLE UNIT	JP48229	SUBMERSIBLE SWITCH PACK FOR DOUBLE UNIT
	ZA012460	SUBMERSIBLE SWITCH PACK FOR SINGLE UNIT AND GREASE- CONTAINING WASTEWATER	JP48299	SUBMERSIBLE SWITCH PACK FOR DOUBLE UNIT AND GREASE-CONTAINING WASTE WATER

	CODE	MODEL
	JP44787	STOP VALVE, 2" (DN 50), PN 16
	JP27484	SPECIAL FILTER WITH HOUSING
	JP48280	GUIDE RAIL SYSTEMS GR 50 (for duplex unit order 2x)
	JP48215	GROUNDWATER SEALING
	JP48282	SUMP EXTENSION (165-265 mm)

SCOPE OF SUPPLY

Plastic sump for use with EN 12050 compliant pumps. Pressure pipe with two swing-type check valves, plug for cable conduit, without pumps. Underfloor version with level-compensating plastic cover frame with cover plate and odour trap for floor drain. Above floor version with cover and seal.



CONTACTS

Customer Service

tel: +39.050.71.61.12

fax: +39.050.71.61.56

e-mail: customerservice.ppi@pentair.com

Technical Support

tel: +39.050.71.61.12

fax: +39.050.71.61.77

e-mail: aftersales.ppi@pentair.com

Marketing

tel: +39.050.71.61.96

fax: +39.050.71.68.01

e-mail: Info-it@pentair.com

Training

e-mail: training-italy@pentair.com



Pentair Water Italy s.r.l. | Via Masaccio, 13 | 56010 Lugnano (PI), Italy | Tel. +39.050.71.61.11 | Fax +39.050.70.31.37
info-it@pentair.com | www.jung-pumpen.it

JUNG PUMPEN GmbH | Industriestraße 4-6 | 33803 Steinhagen | Germany | www.jung-pumpen.com

Pentair Sta-Rite, Pentair Jung Pumpen are trademarks, or registered trademarks of Pentair or its subsidiaries in the United States and/or other countries. All other brand or product names are trademarks or registered marks of their respective owners. Because we are continuously improving our products and services, Pentair reserves the right to change specifications without prior notice. Pentair is an equal opportunity employer.

NVXXXXXX ED. IT - Rev.0 - 01/18 © 2018 Pentair Water Italy. All Rights Reserved.