



HI-FLO 9 FRP Filters

Technical Data Sheet



M010-69 - Rev. 00 - 02/2016

Automatic filters with pneumatic valves and bobbin tank (FRP). Equipped with exclusive **Culligan CSM GBE** control system. Ideal for all commercial and industrial uses. They cover all filtering needs up to a theoretical flow rate of 37 m³/h.

The vertical cylindrical container is made of anti-corrosion composite material with PE liner coated in fiberglass and epoxy resin, in compliance with European Directive 97/23/EC Art. 3.3 for pressure vessels (PED), in compliance with Min. Decree no. 174 of 06/04/2004 for materials suitable for contact with water intended for human consumption.

MAIN FEATURES

- Simplex, Duplex and Triplex configurable
- Equipped with exclusive **Culligan GBE** control unit
- FRP bobbin tank
- PVC valve assembly with pneumatic valves in Noryl

CMS GBE CONTROL UNIT FEATURES

- Self-diagnosis
- Remote display
- Serial ports: USB - RS232 - RS485
- Communication protocols: MODBUS - PROFIBUS

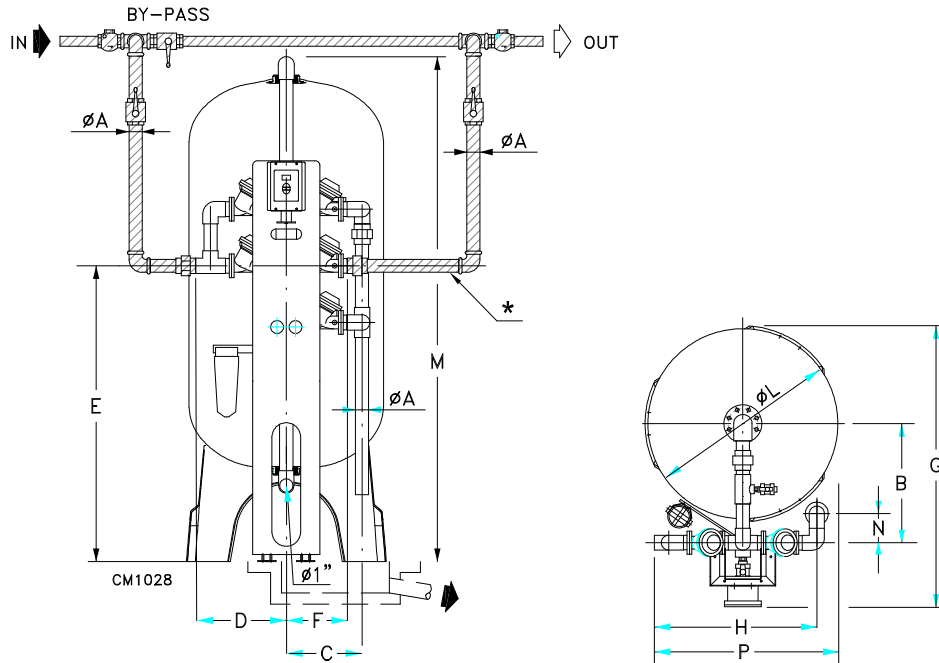
APPLICATION FIELDS

- Potabilization systems
- Apartment blocks
- Hotels
- Holiday farms
- Tourist villages
- Cooling towers
- Car washes
- Laundries
- Schools
- Shopping centers

TECHNICAL SPECIFICATIONS

- Power supply 110-230-24V~/50-60Hz.
- Installed power: 20 W.
- Temperature: 5 to 40°C.
- Operating pressure: min. 2 bar – max 7 bar





Note: THE PARTS INDICATED IN GRAY ARE NOT INCLUDED THE STANDARD CULLIGAN SUPPLY. THE SIZES OF THE DISCHARGE PIPING STARTING FROM THE TRAP (NOT SUPPLIED BY US) MUST BE CALCULATED ACCORDING TO THE FLOW RATES AT THE SYSTEM DRAIN OUTLET.

Model	A * dia. Inlet outlet drain	FLOW RATE to SERVICE (SR) m ³ /h		G ♣ OUT mm	L ♣ ** mm	M ♣ mm	P ♣ mm	Weight in operation # kg
		minimum	maximum					
UF 21	1 ½	2	4.7	987	555	2043	710	770
UR 21		1.2						760
UU 21		-						830
UFP 21		1.5						770
UFX 21		2						760
UF 24	1 ½	2.8	6.7	1039	610	2298	710	1100
UR 24		-						1030
UU 24		-						1150
UFP 24		2.2						1100
UFX 24		3.4						1030
UF 30	1 ½	4.5	11	1204	770	2353	747	1700
UR 30		-						1600
UU 30		-						1780
UFP 30		3.5						1700
UFX 30		4.5						1600
UF 36	2	7	17	1414	927	2410	941	2980
UR 36		-						2720
UU 36		-						3030
UFP 36		5.5						2980
UFX 36		7.5						2720
UF 48	2 ½ x 2 ½	11	27	1657	1226	2654	1264	4490
UR 48	2							3500
UU 48	2 ½ x 2 ½							4785
UFP 48	2 ½ x 2 ½							4490
UFX 48	2							3500
UF 55	2 ½	18	37	1900	1418	3306	1418	4800
UR 55	2 ½ x 2 ½	14						4250
UU 55	2 ½	-						5100
UFP 55	2 ½	12						4800
UFX 55	2 ½ x 2 ½	17						4250

* The diameters given (A) only refer to the fittings of filters and do not indicate the diameters of the pipes connecting them to the hydraulic system. The fittings are female for the inlet and male for the outlet: In models UF-UU-UFP 48 the inlet is dia. 75 female and outlet dia. 75 male.

♣ The dimensions can vary by ±2%.

** All models have a Tripod support base. Consisting of a single skirt with 3 points of contact with the support surface

Weights are approximate.

Culligan reserves the right to change or modify the specifications or dimensions given

CULLIGAN – Via Gandolfi 6 – Cadriano di Granarolo dell'Emilia BO (ITALY)

Tel. +39.051.601.7111 – fax +39.051.765.602 – www.culligan.it